



Application Hints – Installation of NEODUR HE 60 Rapid on set base concrete

Preamble

These hints shall give information on the application of e.g. NEODUR HE 60 rapid. They don't replace the current relevant technical data sheets.

Base concrete / Underground

The base concrete, strength class C 30, must meet the requirements of DIN EN 13813 / DIN 18560-7. Required bond strength 1,5 N/mm².

Mechanical underground preparation such as milling and shot peening.



Afterwards thorough cleaning of the surface from dust and loose particles.



Pre-wetting of the clean sub base the day before the installation.

NEODUR hard aggregate dry screed

Mixing of NEODUR HE 60 rapid with suitable



pan type mixer



in an applicable consistency.



Road milling machine

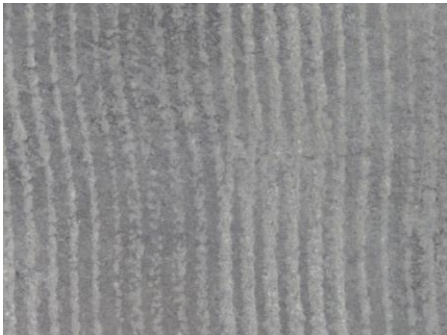


Shot peening

KORODUR HB 5/60 rapid Bonding Compound



Mixing of the bonding compound HB 5/60 rapid with electrical stirrer or in pan type mixer for at least 3 minutes.



Milled underground

The surface must be free from cracks, rough and open-pore. Required levelness acc. to DIN 18202, Tab. 3, line 3.



Application of the uniformly brown colored slurry, 1 – 2 mm thick, on the matt-damp underground and brushing in with street broom.



Installation of NEODUR HE 60 rapid on set base concrete (continuation)

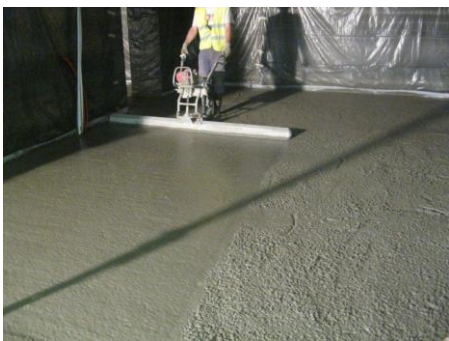
Striking off the hard aggregate screed over 15-50 mm gauges with straightedge lath or vibrator beam on the fresh KORODUR bonding compound.



Application with pneumatic conveyor



Striking off with straightedge/aluminum lath



Striking off with vibrator beam

Smoothing / trowelling of the hard aggregate screed

After striking off the hard aggregate layer, the surface must be trowelled timely with disk float.



Disk float



Helicopter and disk float

After the surface has been smoothed with disk float, for further processing a helicopter can be used, 2 – 3 passes whereby the wings are gradually adjusted steeper.



Helicopter in use

Curing

After the last smoothing pass the surface must be cured. We recommend e.g. the use of our curing agents KOROTEX / KOROSEAL.



Curing with KOROTEX



Curing with KOROSEAL

Joints

Joints are required in the one-layer KORODUR composite screed:

- a) above all joints existing in the base concrete.
- b) as edging joints along uprising construction parts.

Joints are formed by joint cut above the existing joints in the base concrete or vertically along uprising construction parts as edging joints.

Finally, the joints are filled with suitable joint sealants, such as e.g. of bitumen, Thiokol, silicone rubber or elastic polyurethane.

per October 2019

Hints

Our recommendations for application techniques are based on our experiences. It is recommended to adapt processing and material quantities to the given local conditions and we refer in this context to our general terms of sale and delivery. For further information please see our relevant product literature, maintenance hints and tender specifications.

