

# Joint de dilatation de sol tout métal

## All metal floor expansion joint

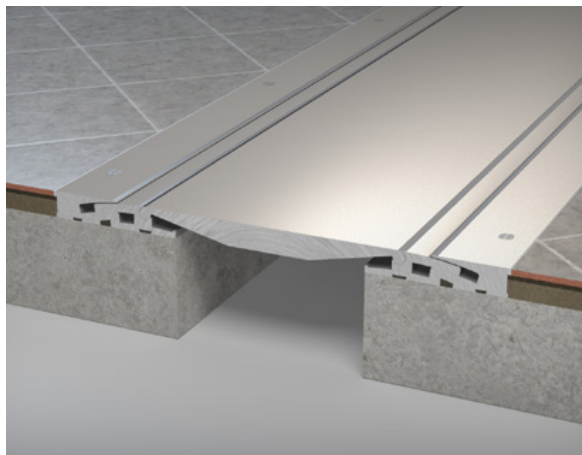
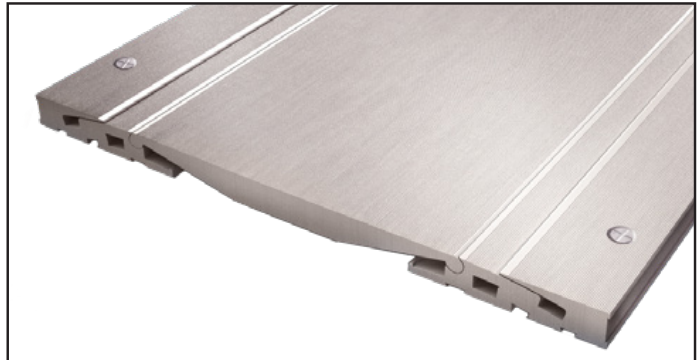
### Series JDH 6.14

Charges très lourdes / Heavy duty

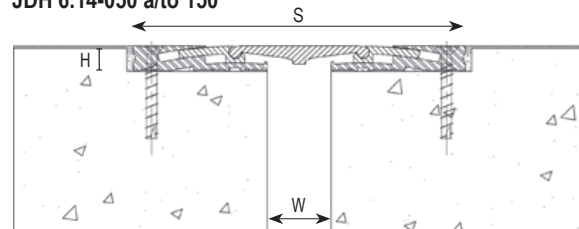
Joint de dilatation de sol sismique tout aluminium conçu pour accepter des mouvements horizontaux, verticaux et transversaux. Cette gamme supporte de fortes charges telles que des poids lourds de 60T et des chariots élévateurs de 6T.

All seismic aluminium floor expansion joint exterior and interior allowing horizontal, vertical and transversal movements.

Suitable for heavy traffic: trucks up to 60T, forklifts up to 6T.

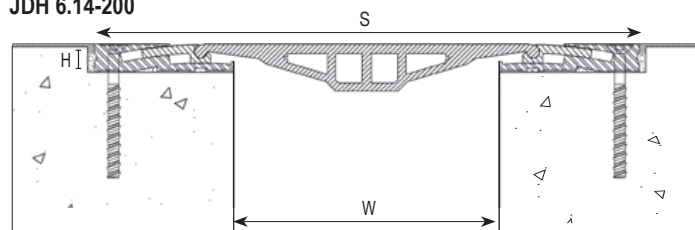


JDH 6.14-050 à/to 150\*



\*Même design pour les ouvertures 100 et 150 mm  
 Same design for the 100 and 150 versions

JDH 6.14-200



Ref. JDH 6.14	6.14-050	6.14-100	6.14-150	6.14-200
W [mm] ouverture / Gap up to [mm]	50	100	150	200
H [mm] hauteur / Depth [mm]	20			
S [mm] approx.	260	310	360	410
Mouvement admissible M [mm] Accommodation of movement M [mm]	+30 / -30			
Couleur / Color	Naturel / Natural			
Matériau / Material	Aluminium / Aluminium			
Longueur standard [ml] / Standard length [lm]	3			
Charge [kN] Load-bearing capacity [kN]				

Réalisation de pièces de jonction de type L, T ou X et pièces spéciales sur demande / Special pieces such as «L», «T» or «X» parts available upon request  
 Option : assemblage des profilés en usine avec pattes de montage (2U/3ml de profilé) / Optional : pro assembly in factory with specific mounting brackets

Fixations : vis béton M10 tous les 300 mm.

The load-bearing capacity is always indicated for a joint in its initial position. In case of opening movements, the load-bearing capacity significantly reduces and the product will thus be only adapted for a light pedestrian traffic. The indicated load-bearing capacities are based on pneumatic wheels vehicles with a contact surface of 200x200 mm.

© All rights reserved - Non contractual drawings - 01/2019